



YRIE

MISSA DE BEATA VIRGINE



KYRIE



Handwritten musical notation on a four-line staff. The word "KYRIE" is written in red ink below the staff.

Handwritten musical notation on a four-line staff. The word "Kyrie" is written in gold ink below the staff.

IOSQVIN DE PRESS

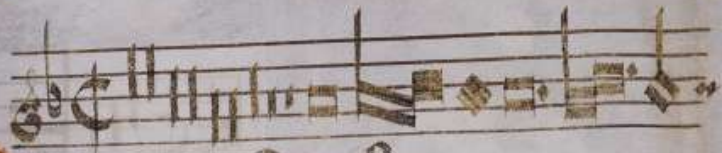


Handwritten musical notation on a four-line staff. The word "Kyrie" is written in blue ink below the staff.

Handwritten musical notation on a four-line staff. The word "Kyrie" is written in gold ink below the staff.

Handwritten musical notation on a four-line staff. The word "Kyrie" is written in gold ink below the staff.

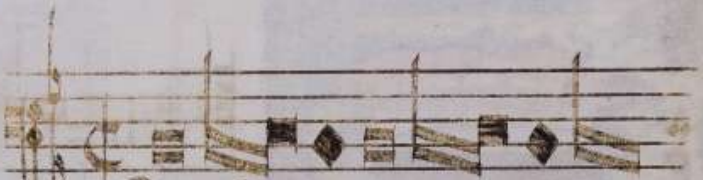




Christe



leison .



Christe



leison .



Christe
leison .

Three staves of musical notation. The first staff begins with a large 'D' and contains the word 'Christe'. The second and third staves continue the melody. The notes are square neumes on a four-line staff.

Christe
leison .

Three staves of musical notation. The first staff begins with a large 'D' and contains the word 'Christe'. The second and third staves continue the melody. The notes are square neumes on a four-line staff.



Chorus

Kyrie

Musical notation on five staves, featuring square neumes and a treble clef.

teison .

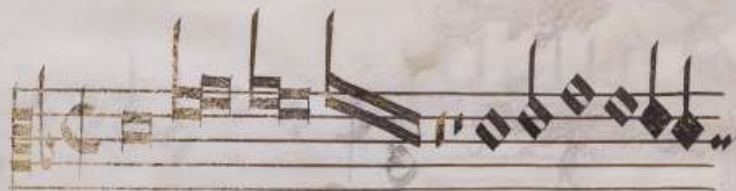


Chorus

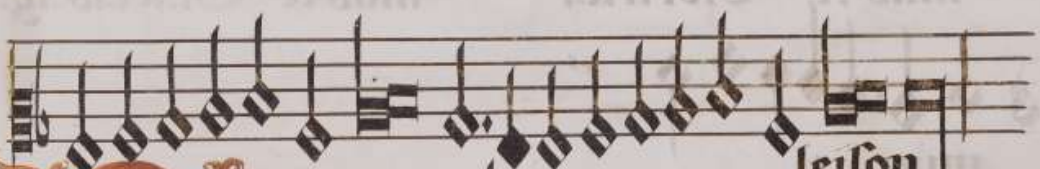
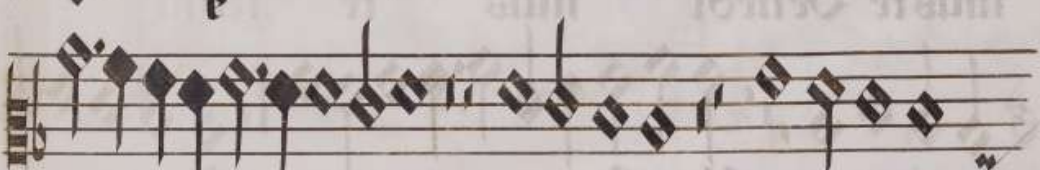
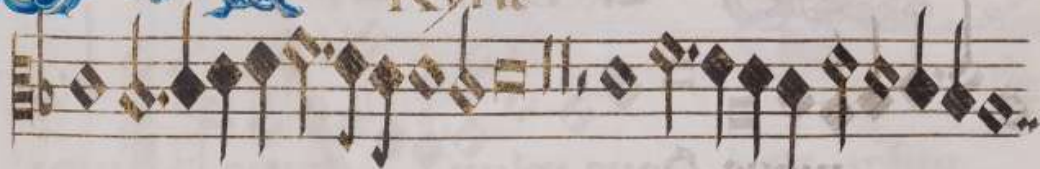
Kyrie

Musical notation on five staves, featuring square neumes and a treble clef.

teison .



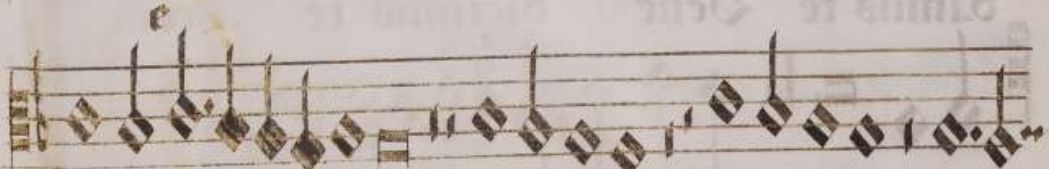
Kyrie



leison.



Kyrie



leison.